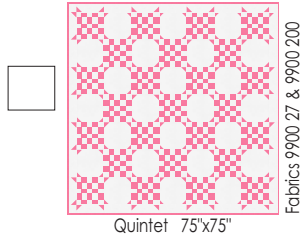


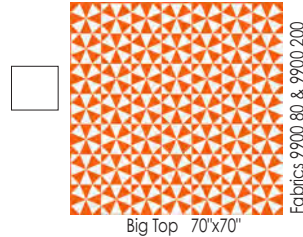
moda **Bella Solids**
Classic 2-color Quilts
"the magic of two"

Make all 6 Bella Classics

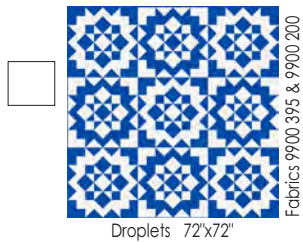
Bella Classic 1



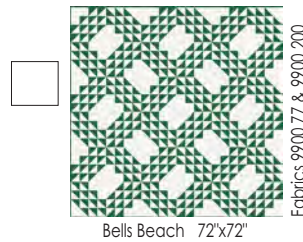
Bella Classic 4



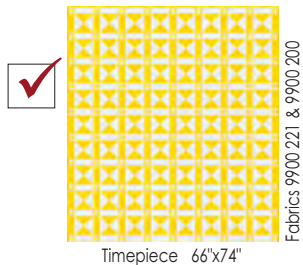
Bella Classic 2



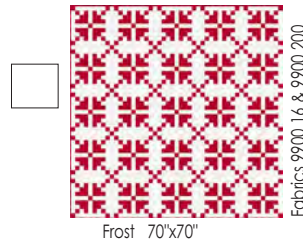
Bella Classic 5



Bella Classic 3

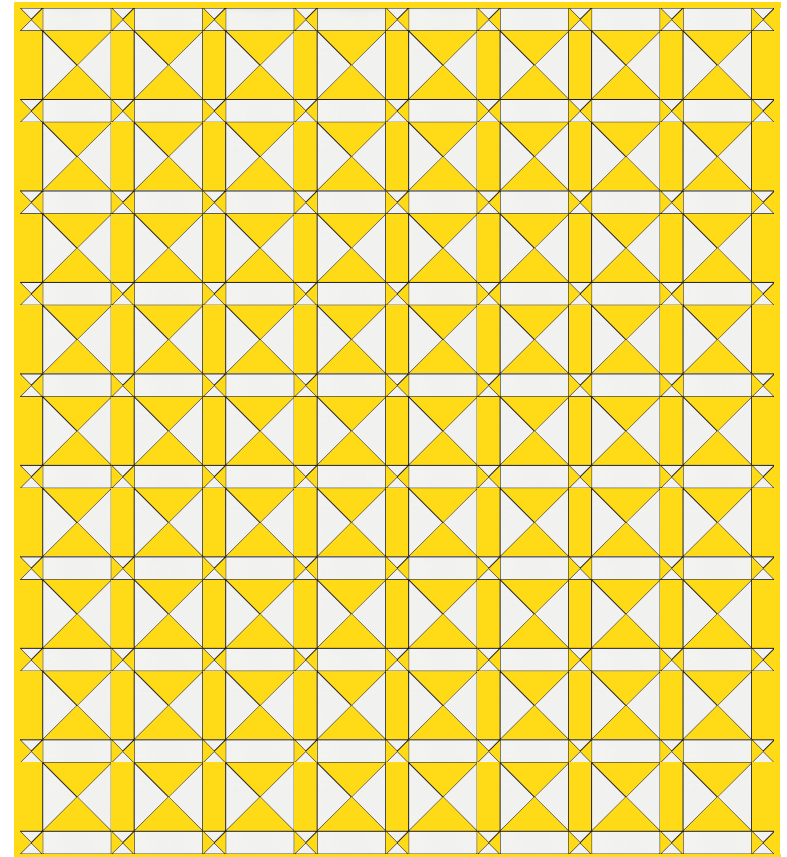


Bella Classic 6



moda **Bella Solids**
Classic 2-color Quilts
"the magic of two"

3



Bella Classic 3 - Timepiece

Finished Size: 66"x74"

Color 1 (9900 221)– 3¾ yds.

Color 2 (9900 200)– 3¼ yds. – Bkgd.

Backing – 4¾ yds.

moda
Bella Classic 3 - Timepiece

Cutting:

Color 1– Yellow

- Cut 8 strips - $7\frac{1}{4}$ " x WOF.
From the strips cut 36 - $7\frac{1}{4}$ " x $7\frac{1}{4}$ " squares for large QSTs.
From the remainder of the 8th strip cut 1 - $2\frac{1}{2}$ " x $6\frac{1}{2}$ " rectangle.
- Cut 4 strips - $3\frac{1}{4}$ " x WOF.
From the strips cut 45 - $3\frac{1}{4}$ " x $3\frac{1}{4}$ " squares small QSTs.
- Cut 5 strips - $6\frac{1}{2}$ " x WOF.
From the strips cut a total of 80 - $2\frac{1}{2}$ " x $6\frac{1}{2}$ " rectangles.
Counting the rectangle cut earlier, there will be a total of 81 rectangles.
- Cut 8 strips - $2\frac{1}{2}$ " x WOF. Set aside for binding.

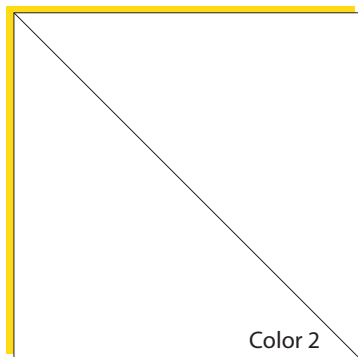
Color 2– White

- Cut 8 strips - $7\frac{1}{4}$ " x WOF.
From the strips cut 36 - $7\frac{1}{4}$ " x $7\frac{1}{4}$ " squares for large QSTs.
- Cut 4 strips - $3\frac{1}{4}$ " x WOF.
From the strips cut 45 - $3\frac{1}{4}$ " x $3\frac{1}{4}$ " squares for small QSTs.
- Cut 5 strips - $6\frac{1}{2}$ " x WOF.
From the strips cut a total of 80 - $2\frac{1}{2}$ " x $6\frac{1}{2}$ " rectangles.

Construction:

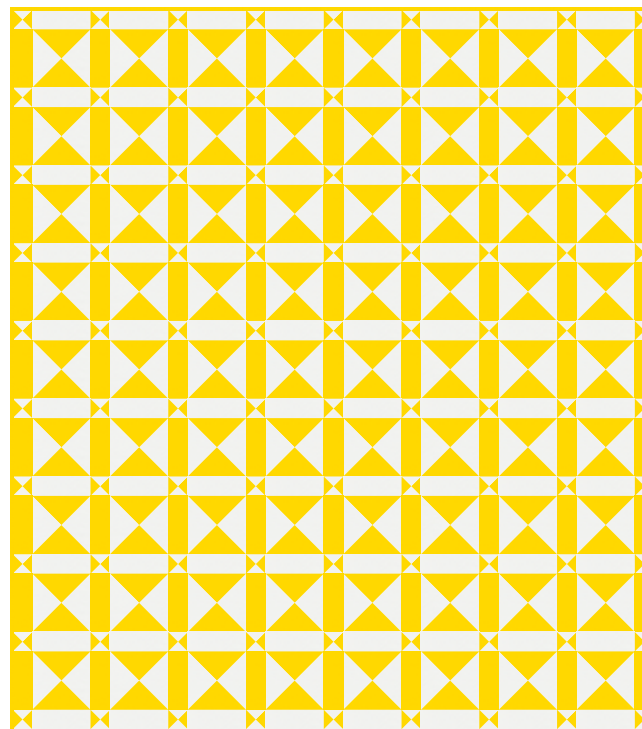
Large Quarter Square Triangles.

1. Select 2 - $7\frac{1}{4}$ " x $7\frac{1}{4}$ " squares, 1 each of Color 1 and Color 2. Draw a diagonal line from corner to corner on one side of the Color 2 square.



2

Assemble Quilt:



Quilt top should measure $66\frac{1}{2}$ " x $74\frac{1}{2}$ " with seams.

Optional edge-stitching - for pieced borders/edges, we recommend stay-stitching a continuous seam $\frac{1}{8}$ " from the edge of the quilt top. This keeps seams together during machine-quilting.

Finishing:

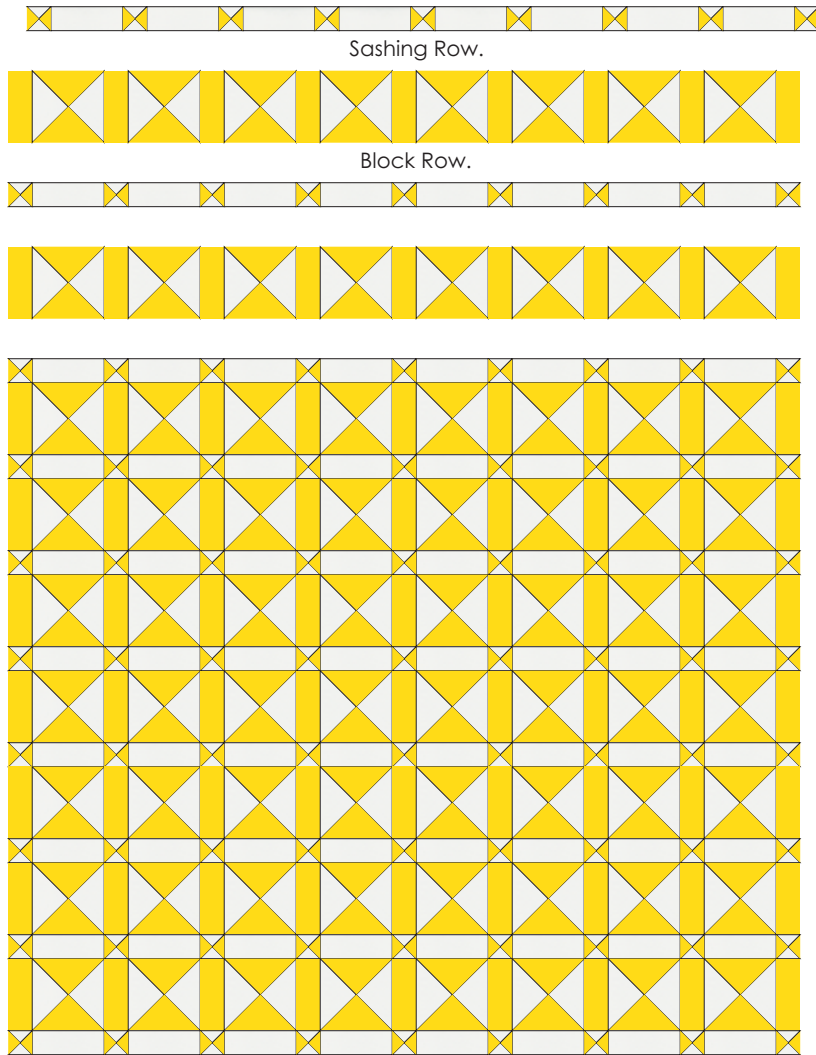
1. Using a diagonal seam, join the 8 remaining Color 1 strips end to end. Press seams open. Fold prepared strip in half wrong sides together and press to make the binding.
2. Layer, Quilt, and Bind.

moda

7

Assemble Quilt:

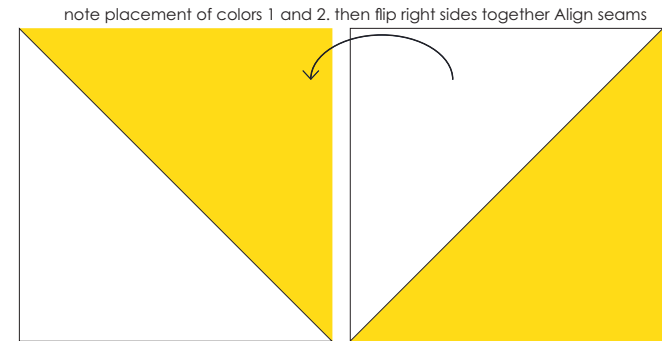
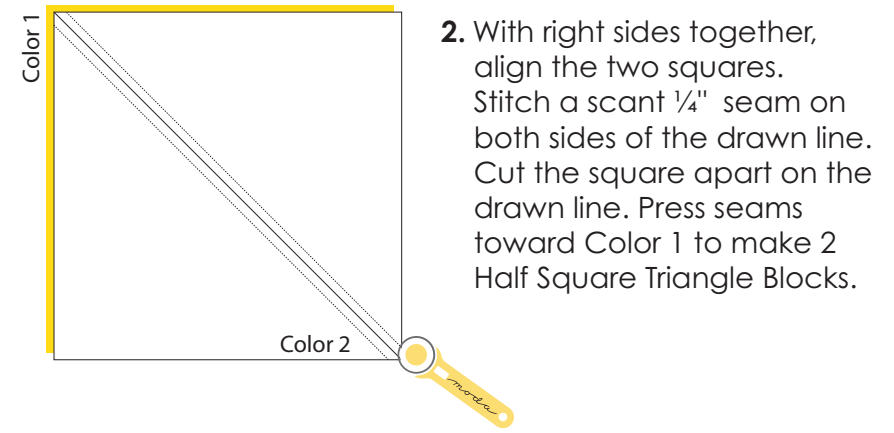
Begin and end with a sashing row. Press seams open.



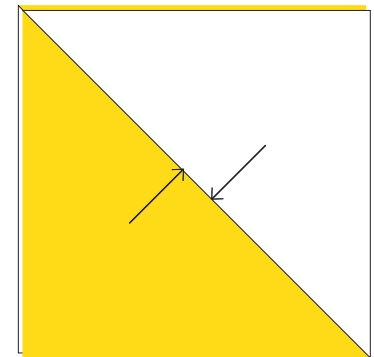
moda

Visit us at modafabrics.com

Construction (cont.):



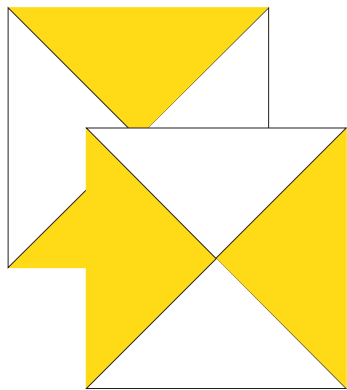
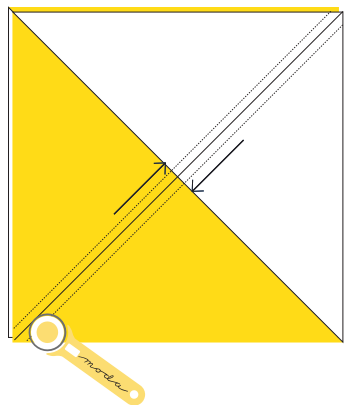
3. Flip units right sides together. Align seams.



moda

Construction (cont.):

4. Align seams. Draw a diagonal line corner to corner. Stitch a scant $\frac{1}{4}$ " seam on both sides of the drawn line. Cut the square apart on the drawn line to make 2 quarter square triangle units.



Blocks should measure $6\frac{1}{2}$ " x $6\frac{1}{2}$ " with seams.

Make a total of 72 Large Hourglass Blocks.

Small Quarter Square Triangles.

1. Select 2 - $3\frac{1}{4}$ "x $3\frac{1}{4}$ " squares, 1 each of Color 1 and Color 2. Draw a diagonal line from corner to corner one side of the Color 2 square.
2. Repeat the steps above to make quarter-square triangles that measure $2\frac{1}{2}$ "x $2\frac{1}{2}$ " with seams. Make 90 for sashing corners.

moda
Visit us at modafabrics.com



About the Hourglass Block

Hourglass blocks have been part of a quilter's repertoire since the early 1800s, and have been used to surround medallions, as rows in quilts, and as a single block for a utility-type quilt. Although it would lend itself to a scrappy version, the antique hourglass quilts we've studied using this design date to the 1920s and 1930s, and all were two-color, two-fabric quilts.



We chose to make a yellow quilt because it's a perfect color for June, and for summer!

moda

Assemble Rows:

Sashing Rows - Make 10

Need: 90 - $2\frac{1}{2}$ " QST blocks and 80 - $2\frac{1}{2}$ "x $6\frac{1}{2}$ " Color 2 rectangles.



Each sashing row should measure $2\frac{1}{2}$ "x $66\frac{1}{2}$ " with seams. Press seams toward sashing strips.

Large QST Rows - Make 9

Need: 72 - $6\frac{1}{2}$ " QST blocks and 81 - $2\frac{1}{2}$ "x $6\frac{1}{2}$ " Color 1 rectangles.



Each large QST row should measure $6\frac{1}{2}$ "x $66\frac{1}{2}$ " with seams. Press seams toward sashing strips.