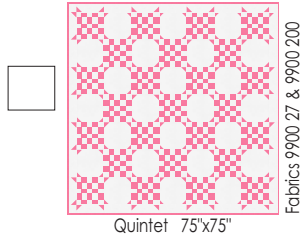


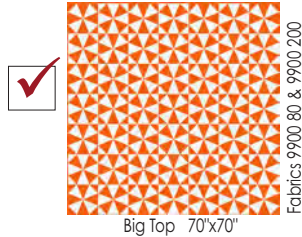
moda *Bella* Solids
 Classic 2-color Quilts
 "the magic of two"

Make all 6 Bella Classics

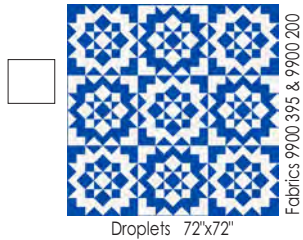
Bella Classic 1



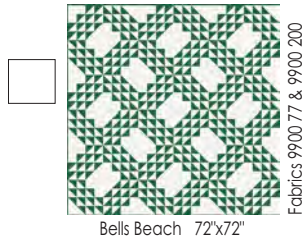
Bella Classic 4



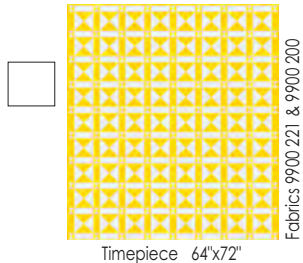
Bella Classic 2



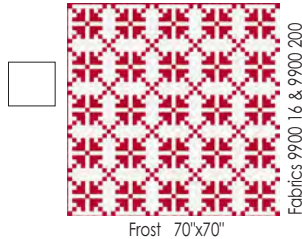
Bella Classic 5



Bella Classic 3

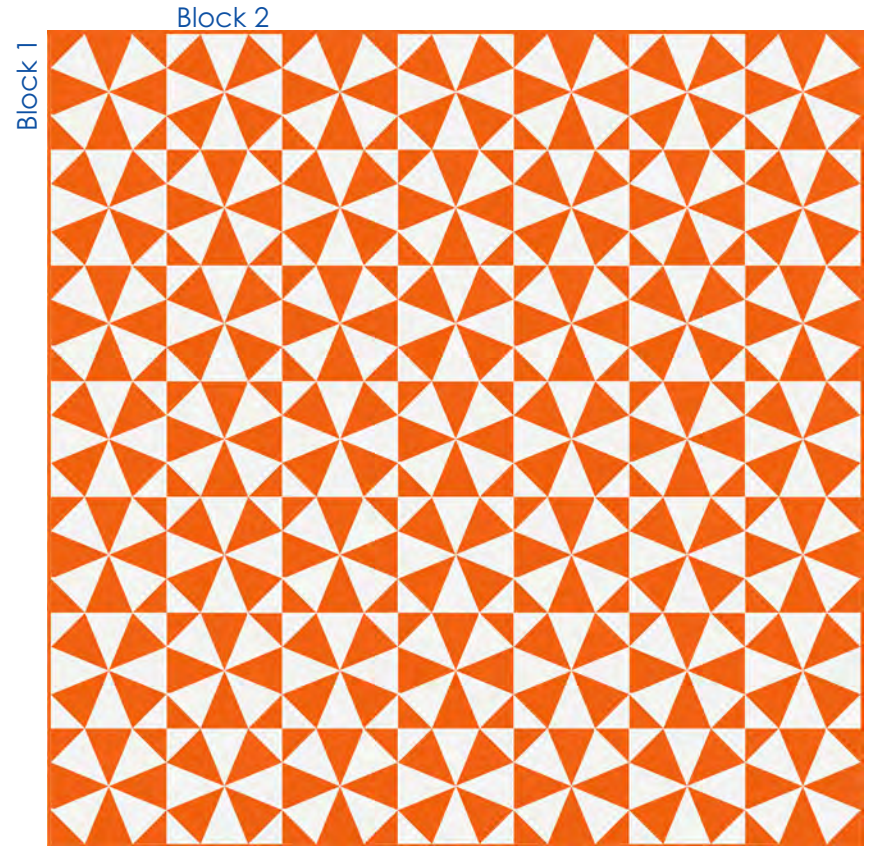


Bella Classic 6



moda *Bella* Solids
 Classic 2-color Quilts
 "the magic of two"

4



Bella Classic 4 - Big Top

Finished Size: 70"x70"

Color 1 (9900 80)– 4 yds.

Color 2 (9900 200)– 3¼ yds. – Bkgd.

Backing – 4¾ yds.

Also needed for this Project:

Marti Michell Large Kaleido Ruler

Stock # 8642

moda
 Bella Classic 4 - Big Top

Cutting:

Color 1- Orange

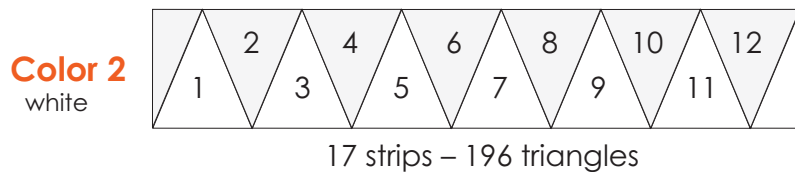
- Cut 17 strips - 5½" x WOF for large triangles.
- Cut 5 strips - 3¾" x WOF. From the strips, cut 50 squares - 3¾" x 3¾". Cut squares once diagonally to make 100 corner triangles.
- Cut 8 strips - 2½" x WOF. Set aside for binding.

Color 2- White

- Cut 17 strips - 5½" x WOF for large triangles.
- Cut 5 strips - 3¾" x WOF. From the strips, cut 48 squares - 3¾" x 3¾". Cut squares once diagonally to make 96 corner triangles.

Cutting Large Triangles

- Using the **Marti Mitchell Large Kaleido Ruler (#8642)**, cut 12 triangles from each 5½" strip. Cut a total of 196 triangles from each color.



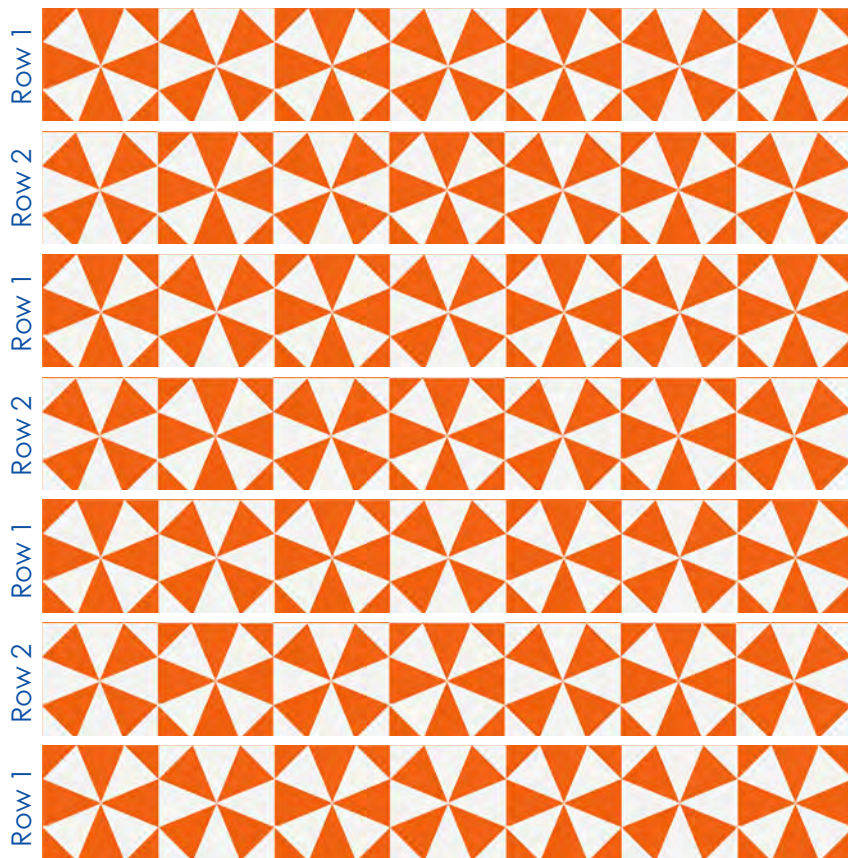
Optional edge-stitching - for pieced borders/edges, we recommend stay-stitching a continuous seam ⅛" from the edge of the quilt top. This keeps seams together during machine-quilting.

Finishing:

1. Using a diagonal seam, join the 8 remaining strips end to end. Press seams open. Fold prepared strip in half wrong sides together and press to make the binding.

2. Layer, Quilt, and Bind.

Assemble Quilt



Join the rows and press the seams open.
Quilt should measure 70½"x70½" with seams.

moda

Visit us at modafabrics.com

Cutting (cont.)

Color 1 orange
From the 5-¾" x WOF strips cut 50- ¾" x ¾" squares.
Cut squares once diagonally to make 100 corner triangles.

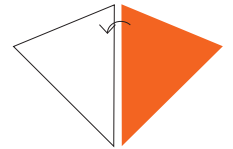


Color 2 white
From the 5-¾" x WOF strips cut 48- ¾" x ¾" squares.
Cut squares once diagonally to make 96 corner triangles.

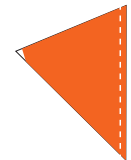


Construction:

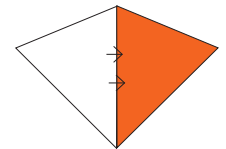
Step 1 Assemble triangle units. White always on the bottom and orange always on the top.



With right sides together stitch a scant ¼" on the right side of the orange triangle.



Step 3 Press seam to orange/dark side.
Note: White triangle should always be on the left in the stitched pair.



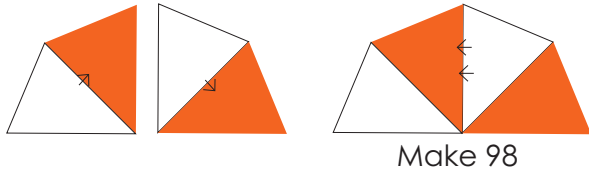
Repeat Steps 1-3 to make 196 pairs of triangle units.

moda

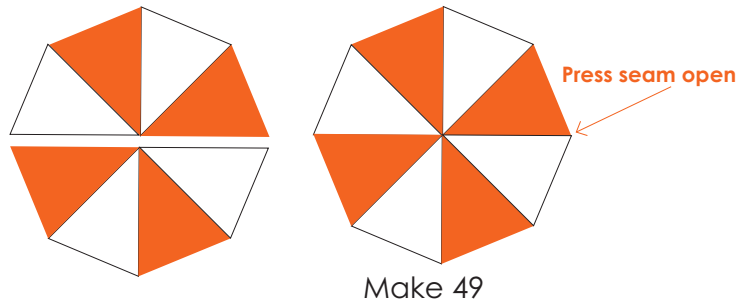
Visit us at modafabrics.com

Construction (cont.)

Step 4 Sew 2 stitched triangle units from Step 3 together. Press seams toward the orange.

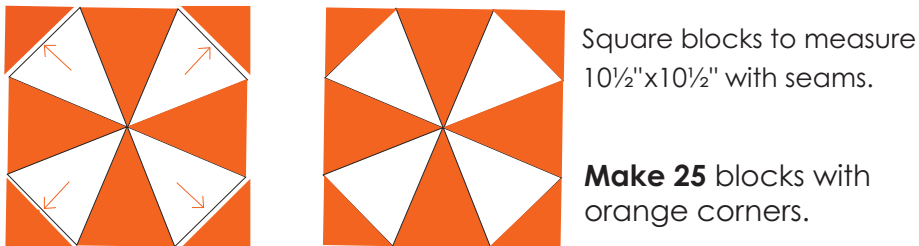


Step 5 Align center points, nest seams and stitch 2 four triangle units together. Press seam open.



Assemble Blocks – Block 1

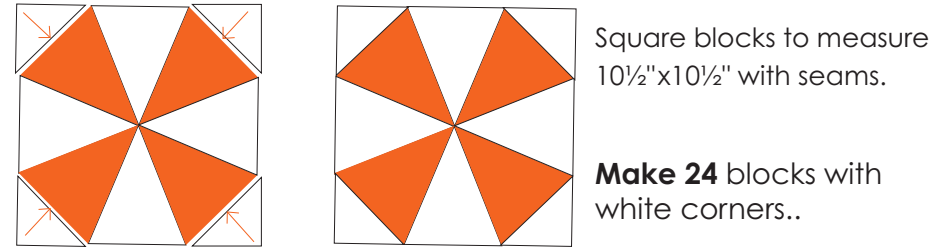
Add the orange corner triangles to the white triangles in block. Press seams toward orange.



moda
Visit us at modafabrics.com

Assemble Blocks – Block 2

Add the white corner triangles to the orange triangles in block. Press seams toward orange.

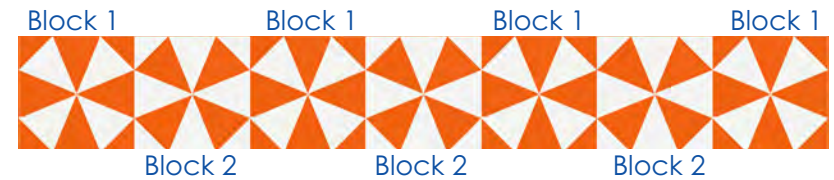


Square blocks to measure 10½" x 10½" with seams.

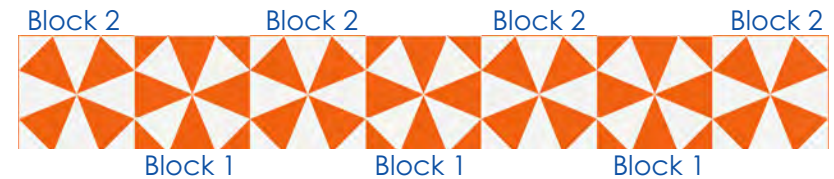
Make 24 blocks with white corners..

Assemble Rows – Total of 7

Row 1- Requires 4 Block 1s and 3 Block 2s
Using a ¼" seam stitch 4 rows. Press seams open.



Row 2- Requires 4 Block 2s and 3 Block 1s
Using a ¼" seam stitch 3 rows. Press seams open.



moda
Visit us at modafabrics.com